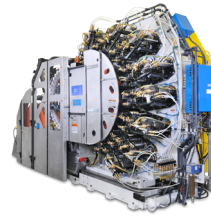


Registration Assembly Upgrade

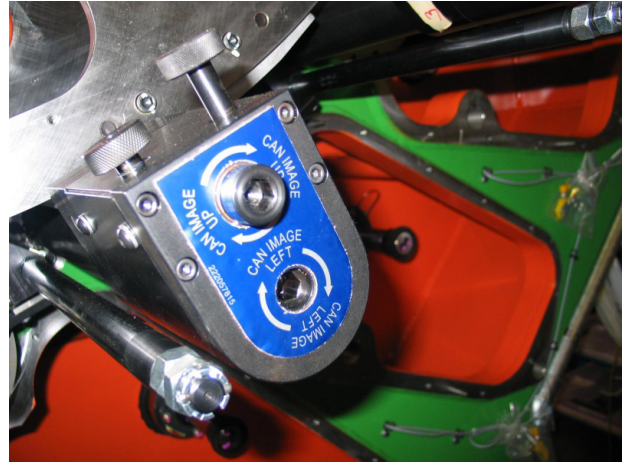
for Stolle Concord Decorators



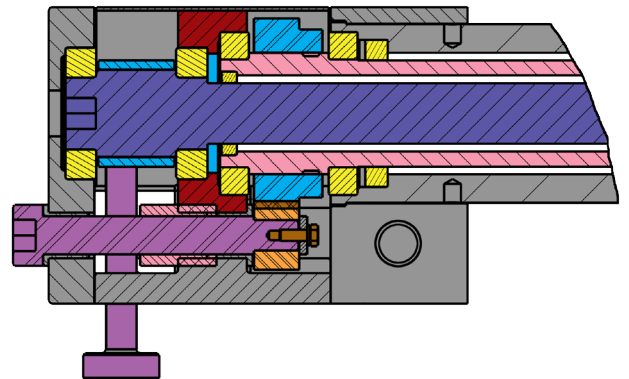
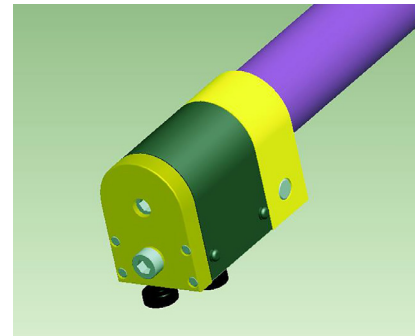
Stolle
Concord Decorator
Technical Update 1407-1

Stolle has redesigned the registration assembly for making running registration adjustments on Concord Decorator ink stations. The new design assembly makes it easier for the operator to adjust the registration of the plate cylinders on each ink station to optimize print quality. Stolle has replaced the hard-to-turn handwheels with socket screws that are easily turned with a standard ½" diameter allen wrench. There are socket adjustments for the circumferential (left to right) and side lay (up and down) adjustments of the plate cylinder. Two thumb screws on the side of the assembly are used to lock the socket screws in place after the cylinder is properly registered.

The new design also reduces the overall length of adjustment assembly, which allows better access for removing and installing the plate cylinder on the ink station. The new registration assembly will be standard on all new Concord Decorators, and is available as a retrofit for existing Concorde (part number 222020060). One assembly will be needed for each ink station on the decorator.



For more information about Stolle's new design registration assembly for the Concord Decorator, please contact Tom Beebe at Stolle Centennial at +1 303-708-5141 or tom.beebe@stollemachinery.com.



Stolle Machinery Company, LLC

6949 South Potomac Street, Centennial, CO 80112
Phone: +1 303-708-9044 Fax: +1 303-708-9045
www.stollemachinery.com

A constant flow of innovations, technology and ideas that benefit customers.