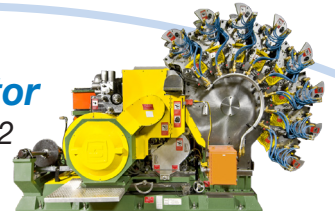


Transfer Assembly Adjustment Kit

for Stolle Rutherford Decorators and Basecoaters

Stolle Rutherford Decorator

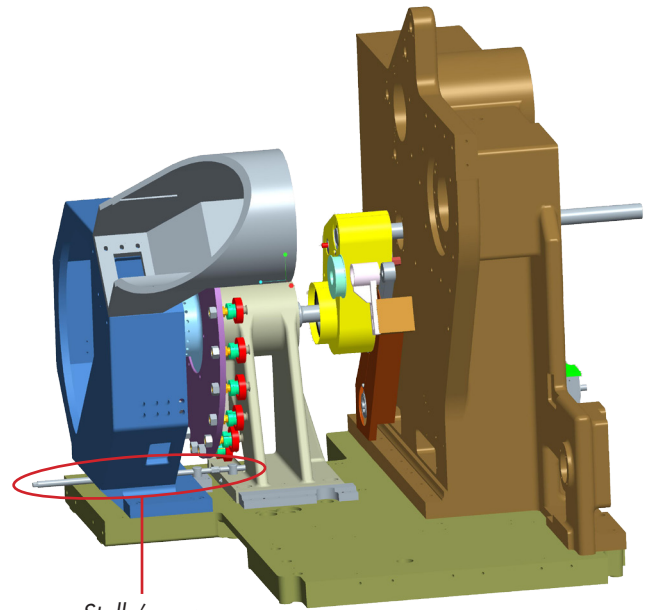
Technical Update 1107-2



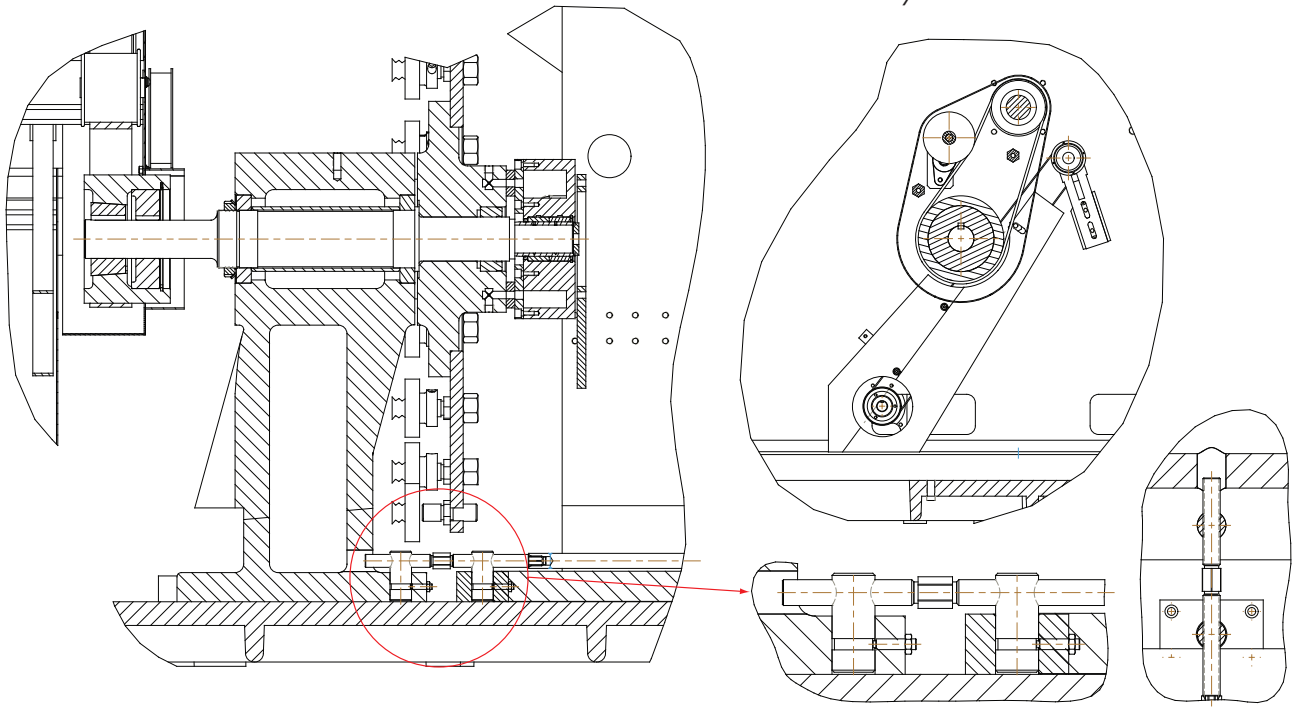
To help customers who run a multiple can size swing line, Stolle has developed a kit that makes it faster and easier to change the transfer position for can lengths on Rutherford Decorators and Basecoaters. The new Rutherford Transfer Assembly Adjustment Kit allows the operator to easily adjust the transfer unit for different can lengths. The transfer unit transfers the printed can bodies from the mandrels to the pin chain. It uses a jack screw with an extension for ease of adjustment, which eliminates the need to manually reposition the drive pulley. It also simplifies the process of repositioning the transfer support by shortening the downtime by more than 50%.

The kit can be installed as a retrofit on any existing Rutherford Decorator or Basecoater machine in less than 4 hours, and it's available on new machines for an upcharge.

For more information and pricing on the new Rutherford Transfer Assembly Adjustment Kit, please contact Mark Santos at Stolle Centennial at +1 303-708-5173 or mark.santos@stollemachinery.com.



Stolle's new
adjustable transfer
assembly



Stolle Machinery Company, LLC

6949 South Potomac Street, Centennial, CO 80112
Phone: +1 303-708-9044 Fax: +1 303-708-9045
www.stollemachinery.com

A constant flow of innovations, technology and ideas that benefit customers.