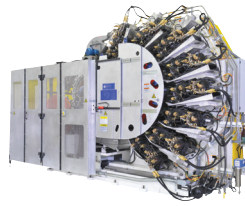


Vertical Vacuum Starwheel Infeed

for Stolle Concord 36 MRT Decorators



Stolle
Concord Decorator
Technical Update 1802-1

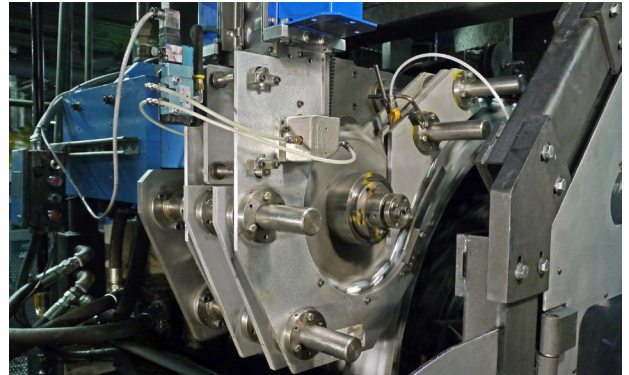
Stolle has developed a new infeed unit for the Concord 36-mandrel decorator that replaces the standard gravity infeed. The new **vertical vacuum starwheel infeed** will allow for higher decorator production speeds of 2200 CPM up to 2500 CPM. The starwheel infeed also provides a more gentle loading action that results in less can damage and waste, especially on thinner wall cans.

The vacuum starwheel provides positive can stabilization and allows loading the cans onto the mandrels at higher speeds. The unit can be adjusted to accommodate any can diameter and length with the proper change parts from Stolle.

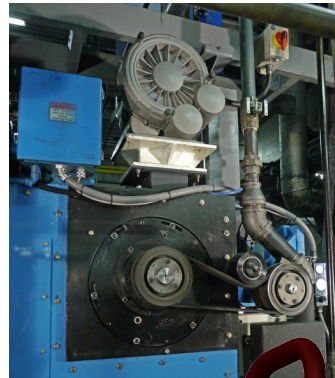
The infeed unit is driven directly off the mandrel wheel bull gear with a single belt and tensioner pulley. The vertical vacuum starwheel infeed assembly is designed to install onto Concord 36 MRT Decorators by a Stolle service technician and includes all necessary parts for the machine retrofit.

Features

- Positive timing between the mandrel turret wheel and starwheel
- Single belt drive from mandrel turret wheel with tensioner pulley
- Gear drive (with anti-backlash gears)
- 14-pocket starwheel
- Starwheel carrier pockets are designed for specified can size
- Carrier pocket contour is specially designed for vacuum starwheel infeed
- Drive is guarded (single guard)
- The two main adjustments (below) are very accessible and easy to make
 - Starwheel pocket to carrier pocket
 - Vacuum can release to carrier pocket
- Brush assembly is optional and easy to install without removing any of the infeed parts
- Pneumatic can stop and release
- Adjustable wiper assembly to push can onto the mandrels
- New loading manifold – vacuum is on 4 degrees before the can is placed in carrier pocket
- Infeed is adaptable to any can diameter and length with change parts
- New blower (vacuum) assembly with hose connects to the starwheel assembly

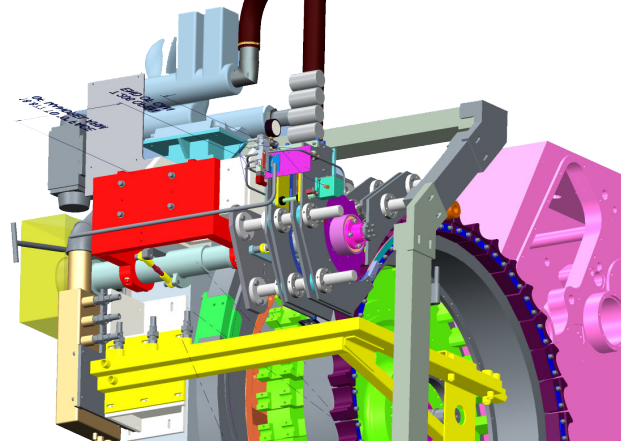


Above: Vertical Vacuum Starwheel Infeed in operation on a Concord 36 MRT Decorator



Left: New vacuum pump (above) and single belt drive with tensioner pulley (below)

Below: Model showing how infeed unit mounts on the Concord 36 MRT Decorator machine



For more information about the Vertical Vacuum Starwheel Infeed for Concord 36 MRT Decorators, please contact Andy Layden at Stolle Centennial at +303-708-5109 or andy.layden@stollemachinery.com, or Tom Beebe at +303-708-5141 or tom.beebe@stollemachinery.com.



Stolle Machinery Company, LLC

6949 South Potomac Street, Centennial, CO 80112

Phone: +1 303-708-9044 Fax: +1 303-708-9045

www.stollemachinery.com

A constant flow of innovations, technology, and new ideas to benefit customers